



KODAK Digital Mammography Solutions

Digital Mammography with Carestream Health

Carestream Health can help with expert advice and solutions based on our intimate knowledge of mammography imaging and workflow. These solutions can transform your department, clinic, or mobile screening operation in ways which improve productivity. They can also help you make a more confident diagnosis.





Capture

Kodak DIRECTVIEW CR Mammography Feature*

High-resolution imaging for screening and diagnostic mammography

KODAK DIRECTVIEW CR 850, 950, 975, Classic and Elite Systems are up-gradable to mammography with the addition of the CR Mammography Feature option.

Ideal for hospitals and clinics, this optional feature enables these KODAK CR Systems to deliver quality and performance in dedicated mammography and mixed mammography/general radiography departments. Easily upgrade most existing DIRECTVIEW CR units currently in general radiography applications to achieve mammography imaging. Choose a single-cassette CR for distributed processing applications, for batch-loading up to eight cassettes using the CR 950/975 for centralised processing with decentralised workflow.

Kodak DIRECTVIEW CR Mammography Total Quality Tool*

Streamline your CR mammography image testing

Avoid potential problems before they occur—with the KODAK DIRECTVIEW CR Mammography feature. The Mammography Total Quality Tool lets you perform objective tests efficiently and accurately with the same CR system interface used for examinations. Tests are done at your convenience—without the cost, scheduling, or disruption of third party testing.

*Not currently available in U.S.

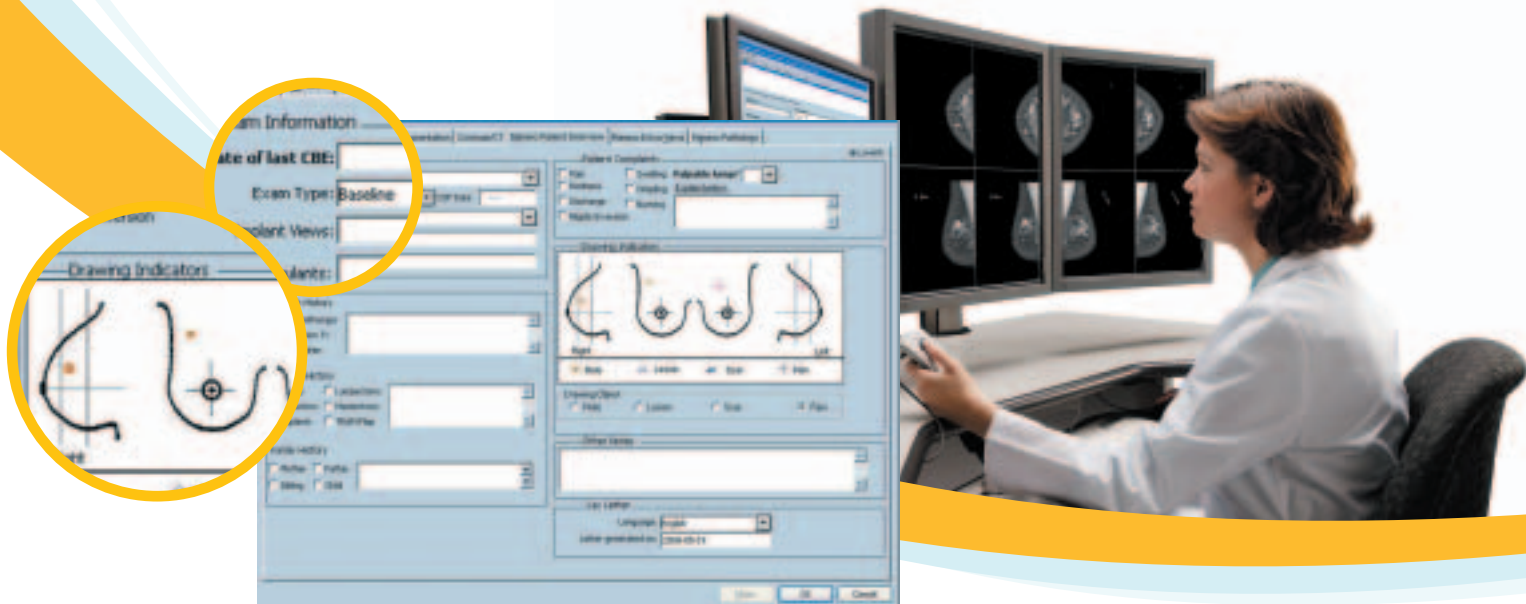
Advantages at a glance

- ▶ Simple up-grade from many KODAK DIRECTVIEW CR Systems
- ▶ 50-micron pixel pitch high-resolution scanning*
- ▶ High-DQE screens
- ▶ KODAK DIRECTVIEW EVP Plus Software
- ▶ Image capture close to chest wall with special mammography cassettes
- ▶ Efficient administrative reporting with digital x-ray dashboard

Advantages at a glance

This complete package includes everything you need for easy, accurate mammography testing:

- ▶ A test phantom kit designed for testing 18 x 24 cm and 24 x 30 cm cassettes
- ▶ A user guide that explains the simple testing exposures and procedures
- ▶ Analysis and reporting software that tracks measurements which may predict the most common failure modes
- ▶ Image test data (for current, as well as previous testing sessions) can easily be exported to a MICROSOFT EXCEL file for review and analysis, or for use in reports and other documents



Manage

Advantages at a glance

- ▶ Accurate documentation and reporting of all findings
- ▶ Follow-up options for better tracking of pathological results
- ▶ Data review during diagnosis or preliminary reading
- ▶ Customised patient letters
- ▶ Generates audit, statistical, and other reports



Kodak Carestream Radiology Information System (RIS)

Comprehensive mammography workflow

A full-featured mammography solution in the KODAK CARESTREAM RIS System enables accurate documentation and reporting of all clinical findings. This graphically enabled set of clinical tools captures patient medical and mammography radiology histories, mammography findings, follow-up and patient tracking, pathology results, and an automated radiologist report. A detailed capture screen for patient concerns and procedure information includes a drawing tool that allows technologists to convey visual information to the radiologist.

Customised patient letters based primarily on the BIRAD® levels selected can be automatically generated. Letters to referring physicians and patient appointment reminders can also be generated and tracked. Available reports include MQSA audit data, initial diagnosis statistics, patient follow-up, and patient statistics.



View

Kodak Carestream PACS for Mammography Solutions

For breast clinics, imaging centres, hospitals, and multi-site enterprises.

This powerful, versatile PACS supports both screening and diagnostic workflow, and integrates easily with most mammography modalities. Scalable and configurable, CARESTREAM PACS is a perfect mammography solution readily tailored to streamline workflow in your facility—regardless of your facility's size, exam volume or workflow demands.

Scalable and configurable, these PACS mammography solutions are available as upgrades to the KODAK CARESTREAM PACS or as a standalone workstation that can be integrated with other vendors' PACS.

The KODAK CARESTREAM Mammography Workstation is specifically designed to view and store mammography images and data. This versatile workstation can display images and data from a full range of modalities including FFDM, CR, US, MR, DR, NM, and PET—as well as digitised film images.

Further mammography features include dedicated diagnostic workstations, advanced digital display support, CAD and an advanced hand controller for screening.

Kodak Digital Mammography CAD System

In conjunction with the KODAK DIRECTVIEW CR Mammography Feature, this system improves cancer detection in screening and diagnostic mammograms. 39.4% of missed cancers could have been detected 14.8 months sooner with the use of KODAK CAD.

KODAK CAD is DICOM compliant, the first in the industry to meet IHE requirements. It is fully compatible with any compliant imaging system and viewing station. Use it to capture images and send to CAD from multiple modalities and (if desired) from multiple locations. Send CAD results to multiple DICOM destinations.

Advantages at a glance

- ▶ Supports all breast imaging modalities: including FFDM, CR, MRI and Ultrasound—from a wide range of vendors
- ▶ User-configurable advanced mammography hanging protocols, configurable at user, group and system level
- ▶ Open architecture and strong IHE support



Print

Advantages at a glance

- ▶ Time to first print just 60 seconds
- ▶ Up to 200 films per hour
- ▶ Ideal for CR to print applications
- ▶ A multi-lingual, touch-screen user interface with instructional video simplifies operation and user training



Kodak DRYVIEW 6800 Laser Imager

Exceptional speed, 650 ppi resolution, and printing flexibility for mixed environments

The KODAK DRYVIEW 6800 Laser Imager delivers the high performance and superb image quality you demand for mammography diagnosis, image sharing, and film archiving. Easy to use, install, and maintain, it prints high-quality images from all approved mammography modalities, including CR and FFDM systems, as well as general radiology images.

Three film drawers accommodate five film sizes for on-demand printing, while the optional five-bin sorter enables easy retrieval of films by modality. Full support for KODAK DRYVIEW DVM and DVM+ Mammography Laser Imaging Film. Provides D-max greater than 4.0 with DVM+ film.



Archive

Kodak Carestream Information Management Solutions

The right information in the right place at the right time—from the right company

KODAK CARESTREAM Information Management Solutions go beyond conventional storage functions to effectively manage the exploding volumes of digital mammography images and information, today and tomorrow.

Easy universal access to images and information and flexible “open” storage architecture allow you to improve patient care and increase productivity—while reducing operating and capital costs, and keeping pace with escalating storage demands.

Choose from a versatile portfolio of solutions including KODAK CARESTREAM Hosted, Enterprise or Regional Information Management Solutions.

Advantages of offsite archive solutions

- ▶ You pay as you go
- ▶ Your costs are operating expenses—not capital costs
- ▶ Carestream Health manages data availability and security—and prevents storage technology and media obsolescence
- ▶ Data security is enhanced by remote, redundant storage—two copies of images and data are stored at all times
- ▶ Your IT resources can be optimized



Count on Carestream Health

KODAK CARESTREAM PACS is backed by Carestream Health expertise from more than 100 years of service to medical imaging, and thousands of successful mammography installations worldwide. Our long tradition of excellence in meeting the needs of mammography professionals continues today with an ongoing commitment to research and development.

An undisputed leader in image science, and a DICOM market leader, Carestream Health actively participates in IHE and other standards boards to improve the quality and utility of medical images and information.

Comprehensive product, technical, and service support—including remote equipment and software management services—is provided worldwide through Carestream Health Technology and Innovation Centers. These centres of excellence are strategically located in Genoa, Italy; Shanghai, China; and Rochester, New York, USA.

More information

To learn more about Kodak's digital solutions for mammography contact your local Carestream Health representative or authorised dealer. Additional information can be found at <http://mammo.carestreamhealth.com>.



Kodak
Licensed Product

Carestream Health, Inc.
150 Verona Street
Rochester, NY 14608
U.S.A.

Carestream Health S.A.
29-31 Route de l'Aéroport
Case Postale 271
CH 1215 Geneva 15
Switzerland

➔ <http://mammo.carestreamhealth.com>

Carestream 
HEALTH

Not all products are available in all countries.

CARESTREAM, DIRECTVIEW, and DRYVIEW are trademarks of Carestream Health, Inc.
The Kodak trademark and trade dress are used under license from Kodak.
All other trademarks are the property of their respective holders.

MI-338 Printed in U.S.A. 8/08 © Carestream Health, Inc., 2008 CAT No. 105 1259